

Site Name: Crow Lane Copse

Site Area: 0.95 hectares **National Grid Reference:** SJ574956

Date of Designation: December 1986 **District:** St. Helens

Date of Last Revision: December 2003 **Local Site Number:** 69

CITATION: An old clay pit with a partial cover of mature oak plantation. The site contains a mosaic of habitats including acid grassland, ponds and woodland.

APPRAISAL: This site has been evaluated against the guidelines approved by the Council for selection of Local Sites. The site's evaluation against the guidelines is set out below.

Guideline		Comment
HABITATS		
H1;	Rarity	2 priority BAP habitats; 2 priority Habitats Directive habitats; 2 regionally important habitats.
H2;	Diversity	10 habitats recorded.
H3;	Nearness	29 sites within 1Km.
H4.	Isolation	--
PLANTS		
SP1;	Rarity	4 locally rare species.
SP2;	Diversity	Total of 120 plant species. One of 58 sites with more than 100 species.
SP3;	Naturalness	91.67% of the plants are native to the borough. Colonisation has been aided by man and the site has been physically altered.
SP4.	Nationally Rare	--
ANIMALS		
General		
SP5;	Rare/priority	--
Birds		
B1;	Non-breeding population	--
B2;	Breeding population	--
B3;	Regional rare/scare	--
B4;	Breeding assemblage	--
B5.	Assemblage, breeding, wintering, passage.	--
Dragonflies		
Od1.	Breeding	--
Od2.	Regional rare/scarce	--
Butterflies		
Bf1;	Region rare breeding	--
Bf2.	Breeding assemblage	--
Amphibians		
A1;	Rarity	--
A2.	Exceptional populations	--
Reptiles		
R1;	Population of native species.	--
R2;	Exceptional population	--
Bats		
Bat1;	Roost	--
Bat2.	Assemblage	--
Mammals		
Mam1.	Breeding	--

SUMMARY: The combination of these factors has led to this site being identified as a Local Site.

NOTE: Validated data from 1981 to December 2003 have been used in this assessment. Other data may become available to support this designation.

Status of features of nature conservation importance

Habitats

2 Priority BAP habitats

Unimproved neutral grassland
Eutrophic standing water - pond

2 Priority Habitat Directive habitats

Unimproved neutral grassland
Eutrophic standing water - pond

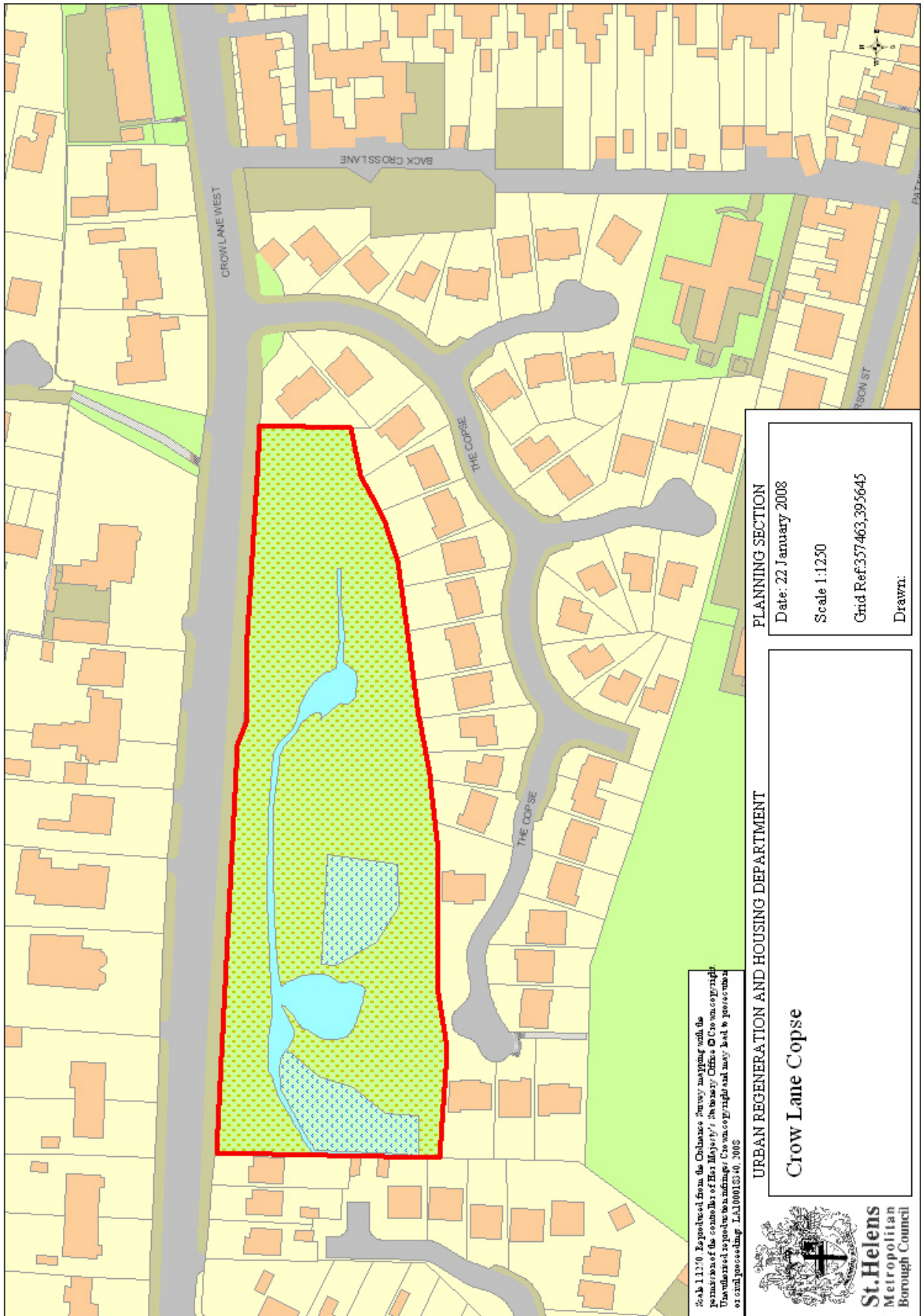
2 Regionally Important habitats (North West Biodiversity Audit)

Unimproved neutral grassland
Standing water / pond

Plants

4 Locally rare species

Wood-sedge (*Carex sylvatica*)
Fen Bedstraw (*Galium uliginosum*)
Creeping-jenny (*Lysimachia nummularia*)
Marsh Ragwort (*Senecio aquaticus*)



Scale 1:1170. Reproduced from the Ordnance Survey mapping with the permission of the controller of Her Majesty's Stationery Office. Crown copyright. Unauthorised reproduction is prohibited. Crown copyright and may not be reproduced or copied in any form or by any means without the prior written permission of the Controller of Her Majesty's Stationery Office. 2008

PLANNING SECTION
 Date: 22 January 2008
 Scale 1:1230
 Grid Ref: 357463, 395645
 Drawn:

URBAN REGENERATION AND HOUSING DEPARTMENT
 Crow Lane Copse

