

Site Name: Sankey Brook

Site Area: 6.42 hectares **National Grid Reference:** SJ553952

Date of Designation: December 2003 **District:** St. Helens

Date of Last Revision: n/a **Local Site Number:** 75

CITATION: A stretch of Sankey Brook which provides habitat for Water voles.

APPRAISAL: This site has been evaluated against the guidelines approved by the Council for selection of Local Sites. The site's evaluation against the guidelines is set out below.

Guideline		Comment
HABITATS		
H1;	Rarity	2 priority BAP habitats; 2 priority Habitats Directive habitats; 2 regionally important habitats.
H2;	Diversity	6 habitats recorded.
H3;	Nearness	98 sites within 1Km.
H4.	Isolation	--
PLANTS		
SP1;	Rarity	--
SP2;	Diversity	Total of 25 plant species.
SP3;	Naturalness	96% of the plants are native to the borough. Colonisation has been aided by man and the site has been physically altered.
SP4.	Nationally Rare	--
ANIMALS		
General		
SP5;	Rare/priority	--
Birds		
B1;	Non-breeding population	--
B2;	Breeding population	--
B3;	Regional rare/scare	--
B4;	Breeding assemblage	--
B5.	Assemblage, breeding, wintering, passage.	--
Dragonflies		
Od1.	Breeding	--
Od2.	Regional rare/scarce	--
Butterflies		
Bf1;	Region rare breeding	--
Bf2.	Breeding assemblage	--
Amphibians		
A1;	Rarity	--
A2.	Exceptional populations	--
Reptiles		
R1;	Population of native species.	--
R2;	Exceptional population	--
Bats		
Bat1;	Roost	--
Bat2.	Assemblage	--
Mammals		
Mam1.	Breeding	Guideline met – Water voles.

SUMMARY: The combination of these factors has led to this site being identified as a Local Site.

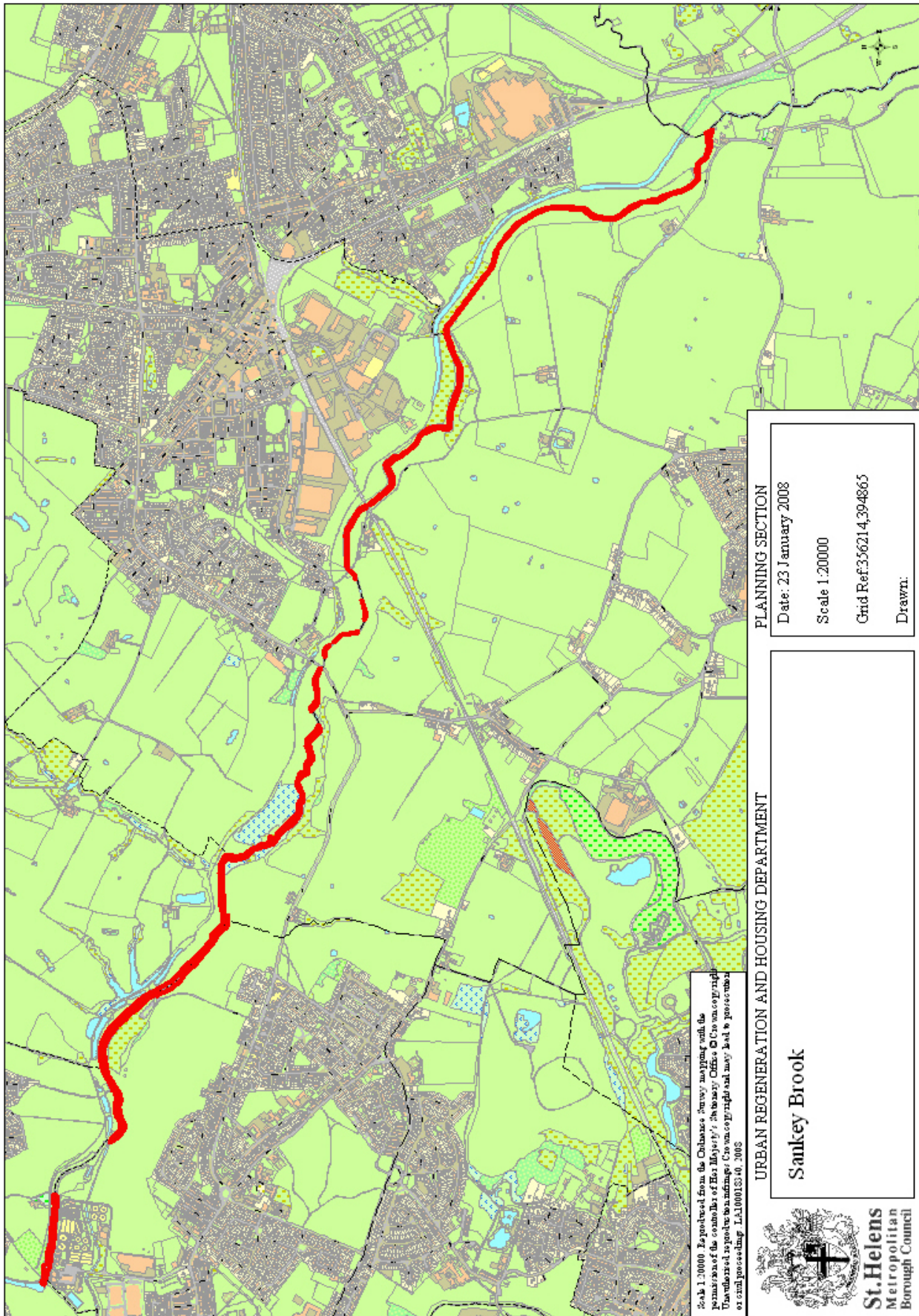
NOTE: Validated data from 1981 to December 2003 have been used in this assessment. Other data may become available to support this designation.

Status of features of nature conservation importance

Animals

Mammals

1 Wildlife and Countryside Act – Schedule 5 species Water voles (*Arvicola aquaticus*)



Scale 1:20000. Reproduced from the Ordnance Survey map using the permission of the Controller of Her Majesty's Stationery Office. Crown copyright. Unauthorised reproduction is prohibited. Crown copyright and may not be reproduced or used in any form without the prior written permission of the Controller of Her Majesty's Stationery Office. L.A.100103.10. 2008

PLANNING SECTION
 Date: 23 January 2008
 Scale 1:20000
 Grid Ref: 356214, 394865
 Drawn:

URBAN REGENERATION AND HOUSING DEPARTMENT
Sankey Brook

