

Site Name: The Dingle, Newton

Site Area: 0.18 hectares **National Grid Reference:** SJ565950

Date of Designation: December 1986 **District:** St. Helens

Date of Last Revision: December 2003 **Local Site Number:** 79

CITATION: A small and rich sedgemarksh surviving on the edge of a former sandstone quarry. The site supports populations of marsh orchid as well as plants such as Bog pimpernel and Bristle club-rush. Within the marsh is a small patch of dry heath dominated by heather.

APPRAISAL: This site has been evaluated against the guidelines approved by the Council for selection of Local Sites. The site's evaluation against the guidelines is set out below.

Guideline		Comment
HABITATS		
H1;	Rarity	3 priority BAP habitats; 3 priority Habitats Directive habitats; 4 regionally important habitats; 1 locally uncommon habitat.
H2;	Diversity	5 habitats recorded.
H3;	Nearness	27 sites within 1Km.
H4.	Isolation	--
PLANTS		
SP1;	Rarity	1 regionally important species; 3 locally rare species.
SP2;	Diversity	Total of 67 plant species.
SP3;	Naturalness	97.94% of the plants are native to the borough. Colonisation has been aided by man and the site has been physically altered.
SP4.	Nationally Rare	--
ANIMALS		
General		
SP5;	Rare/priority	--
Birds		
B1;	Non-breeding population	--
B2;	Breeding population	--
B3;	Regional rare/scare	--
B4;	Breeding assemblage	--
B5.	Assemblage, breeding, wintering, passage.	--
Dragonflies		
Od1.	Breeding	--
Od2.	Regional rare/scarce	--
Butterflies		
Bf1;	Region rare breeding	--
Bf2.	Breeding assemblage	--
Amphibians		
A1;	Rarity	--
A2.	Exceptional populations	--
Reptiles		
R1;	Population of native species.	--
R2;	Exceptional population	--
Bats		
Bat1;	Roost	--
Bat2.	Assemblage	--
Mammals		
Mam1.	Breeding	--

SUMMARY: The combination of these factors has led to this site being identified as a Local Site.

NOTE: Validated data from 1981 to December 2003 have been used in this assessment. Other data may become available to support this designation.

Status of features of nature conservation importance

Habitats

3 Priority BAP habitats

Unimproved acid grassland
Unimproved neutral grassland
Acid dry dwarf shrub heath

3 Priority Habitat Directive habitats

Unimproved acid grassland
Unimproved neutral grassland
Acid dry dwarf shrub heath

4 Regionally Important habitats (North West Biodiversity Audit)

Unimproved acid grassland
Unimproved neutral grassland
Marshy grassland
Acid dry dwarf shrub heath

1 Locally uncommon habitat

Acid dry dwarf shrub heath

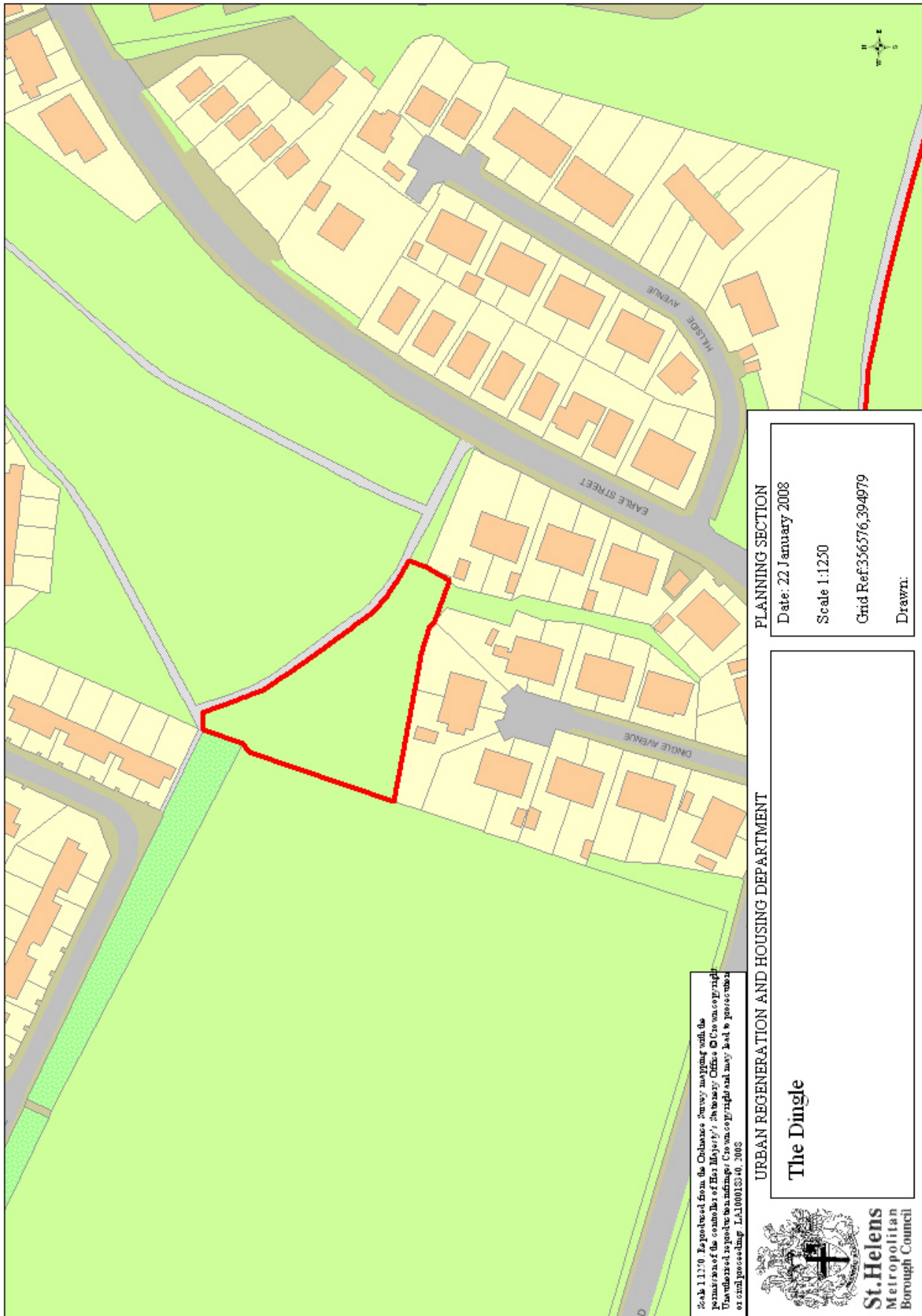
Plants

1 Regionally important species

Bog Pimpernel (*Anagallis tenella*)

3 Locally rare species

Bog Pimpernel (*Anagallis tenella*)
A moss (*Drepanocladus aduncus*)
A moss (*Isolepis setacea*)



Scale 1:1250. Reproduced from the Ordnance Survey mapping with the permission of the Controller of Her Majesty's Stationery Office. © Crown Copyright. Unauthorised reproduction prohibited. Crown copyright and may not be reproduced or copied in any form or by any means without the prior written permission of the Controller of Her Majesty's Stationery Office. L.A.100183.0, 2008

PLANNING SECTION
 Date: 22 January 2008
 Scale 1:1250
 Grid Ref: 356576, 394979
 Drawn:

URBAN REGENERATION AND HOUSING DEPARTMENT
The Dingle

