

Recycling Service



Green bin

Seasonal fortnightly collection

Grass cuttings/leaves

Flowers/plants/weeds

Privet/hedge clippings

Small branches and twigs

Garden waste is a subscription service



Find your collection day: www.sthelens.gov.uk/rubbish



Food Waste Caddy

Weekly collection

Food Leftovers

Fruit & Vegetables

Tea Bags

Dairy Products

Fish

Rice, Pasta & Beans

Meat & Bones

Bread, Cakes & Pastries

Free bags on request





Black Box

Weekly collection

Glass bottles

Glass jars

(please rinse & remove lids)



Green Bag

Weekly collection

Brown cardboard

Clean cardboard food packaging

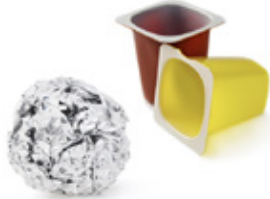
Brown paper





White Bag Weekly collection

- Clean plastic bottles (take lid off)
- Yoghurt pots
- Butter/margarine tubs
- Plastic food trays
- Drinks cans
- Food cans
- Empty aerosol cans
- Clean aluminium foil



Blue Bag Weekly collection

- Newspapers & magazines
- Catalogues
- Junk mail
- Directories
- Office paper
- Envelopes
- No greetings cards
- No wrapping paper



Did you know... the average household in St Helens Borough throws out 28% of food waste and 7% of textiles in the brown general waste bin per year, we can help avoid this.



Food Waste

Your food waste impacts Climate Change. When we throw food away, it rots and releases methane, a greenhouse gas into the atmosphere. Methane has more than 80 times the warming power of carbon dioxide. In St Helens by using your food waste caddy, the food gets turned into heat for our homes, and fertilizer for farmers. You can order your food waste caddy at:

www.sthelens.gov.uk/containers Ensuring you use up all of the food you buy and let none of it go in your brown bin is a keyway to reduce your carbon footprint, and help tackle climate change. Take a closer look at: **www.lovefoodhatewaste.com/take-action-save-food/our-planet-your-food**



Around 30% of clothing in our wardrobes has not been worn for at least a year, so why not have a sort out and donate to one of our textile banks around the Borough, you can find your nearest one by visiting **www.sthelens.gov.uk/recycling** In a recent study as much as 7% of waste collected in a year,

in the Borough's brown bins was made up of textiles that could have been reused or recycled, that's an estimated 2,800 tonnes of recyclable materials gone to waste. You can help prevent this.

You can order your containers at **www.sthelens.gov.uk/recycling**
For more tips on where to recycle visit: **www.recyclenow.com**