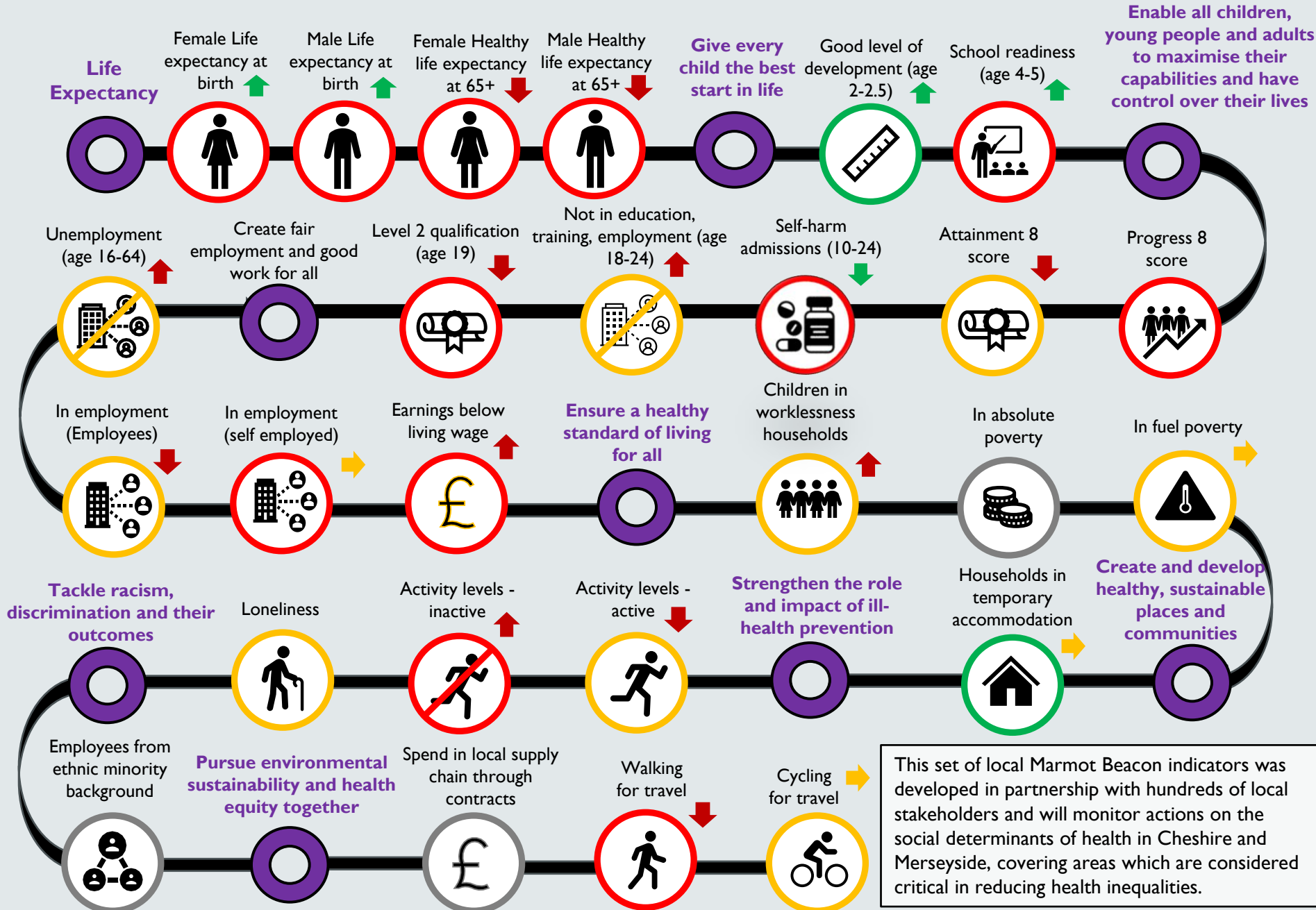


Marmot Beacon Indicators - St. Helens 2024: A comparison to England



St. Helens Facts

185,982 people live in St. Helens. Around **43%** of the population live in the top 20% most deprived areas in England.

Women can expect to live to **80.5 years** and men to **76.8 years**. On average, men will spend **25.7%** of their lives in poor health and women will spend **28.7%** of their lives in poor health.

Key:

Statistical significance compared to England:

- Better: Green circle
- Similar: Yellow circle
- Worse: Red circle
- Missing: Grey circle

Trend

- Improving: Green arrow (up), Red arrow (down)
- No change: Yellow arrow (right)
- Getting worse: Red arrow (up), Green arrow (down)

Sources: Last update: December 2024

Progress 8 score and Pupils who go on to achieve a Level 2 qualification at age 19 from the Department for Education (DfE). Employment and worklessness from NOMIS. Living wage from ONS. All other data from Office for Health Improvement & Disparities. Public Health Profiles. 2023 <https://fingertips.phe.org.uk> © Crown copyright 2023

Contact: rachelbrown@sthelens.gov.uk

This set of local Marmot Beacon indicators was developed in partnership with hundreds of local stakeholders and will monitor actions on the social determinants of health in Cheshire and Merseyside, covering areas which are considered critical in reducing health inequalities.